

## Local Manageable 8E1 Fiber Multiplexer



**Model:AZ-OP-8E1-4ETH**

### **Functions:**

AZ-OP-8E1-M is part of Multi E1 and Fast Ethernet transmission system family, used to build a 150Mb/s optical point-to-point link. Based on an ASIC chip; it performs the transportation of 8 E1 and a fast Ethernet at full speed. It also provides an order-wire and an auxiliary UART interface for Management. The optical fiber multiplexer offers a highly integrated solution for the perfect function, stable performance and convenience with low power consumption. The fiber multiplexer's work status can be monitored and configured by management easily.

### **PRODUCT CHARACTERISTIC:**

Merges the Ethernet and time-division multiplex (TDM) transmission to the same pipe.

Provides 8 E1 over fiber transmission.

Provides 4 100Mb/s Fast Ethernet interface(optional).

The standard E1 interfaces comply with ITU-T G.703, G.823 and G.742.

Supports either auto-negotiation or hardware configuration selection of the Ethernet operation.

The Ethernet interface supports VLAN and Flow Control function(set by RS232 NMS).

Real-time Monitoring and all necessary alarm display for easy management.

Supports Local and Remote Loop-back Test.

Uses standard telephone set as order-wire(optional).

Provides one transparent RS232 interface for user's data links(optional).

Provides local Network Management(optional).

Extends the fiber link up to 120 km without any repeater.

Compact single board Terminal.

## Interface:

### E1 interface:

Interface code: HDB3 code  
Line speed: 2.048Mbp/s  $\pm 50$ ppm  
Interface standard: ITU-T G 703  
Interface impedance:  
75 $\Omega$ /unbalanced (BNC) or 120 $\Omega$ /balanced (RJ45)  
Allowed attenuation: 0~6dBm

### Ethernet 10/100Base-T Port:

Rate: 10/100M, full/duplex auto-negotiation  
Protocol: Support IEEE 802.3  
AC Address Entries: 4096 Entries  
Connector: RJ45

### Power supply:

working voltage range wide, good  
anti-disturb and Isolation, work stable  
option I – DC-48V, range DC-36V~DC-72C  
option II – AC220V, range  
AC165V~AC240V

Power Consumption:  $\leq 5$  Watts

### Fiber interface:

Optical wavelength:  
1310nm or 1550nm for single-mode fiber  
850nm/1310nm for multi-mode fiber  
Transmission distance:  
Multi Mode fiber: 2Km  
Single mode fiber: 20Km/40Km/60 Km/120Km optional  
Optical interface: SC or FC or ST

### RS232/Console port

Rate : 9600Kbps (Asynchronous)  
Interface characteristic : satisfies ITU-T V.24 standard  
Connector : RJ45

### Dimension:

433mm(L)

138mm(W)

44mm(H) **environment**

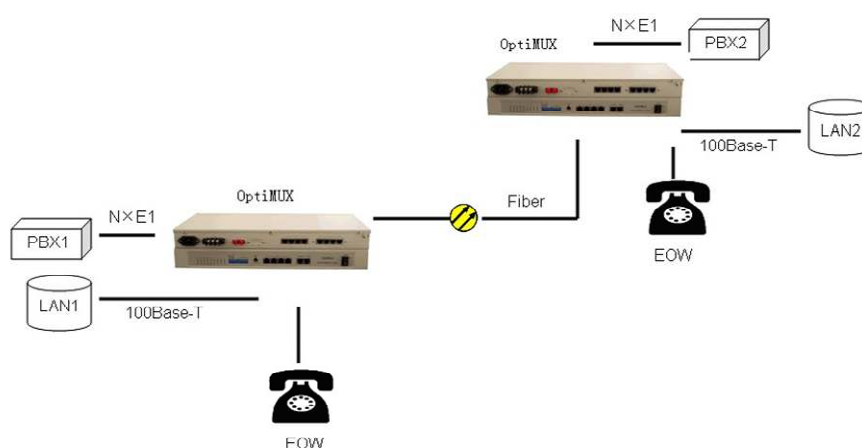
**condition** Operating temperature:

0C~+50 C

Storage temperature: -20 C~+70 C

Relative temperature: 95% (uncondensed)

## APPLICATION:



## Order information:

AZ-OP-8E1-M	8E1 over fiber multiplexer, E1 port 75ohm(BNC) or 120ohm(RJ45), single mode, dual fiber, 20Km, power AC 220V or DC48V
AZ-OP-8E1-M/AD	8E1 over fiber multiplexer, E1 port 75ohm(BNC) or 120ohm(rj45), single mode, dual fiber, 20Km, double power AC220V and DC48V
AZ-OP-8E1-4ETH-M/AC	8E1 over fiber multiplexer, E1 port 75ohm(BNC) or 120ohm(RJ45), 4*10/100M Ethernet, single mode, dual fiber, 20Km, power AC 220V, console management
AZ-OP-8E1-4ETH-M/AD	8E1 over fiber multiplexer, E1 port 75ohm(BNC) or 120ohm(rj45), 4*10/100M Ethernet, single mode, dual fiber, 20Km, double power AC220V and DC48V, console